

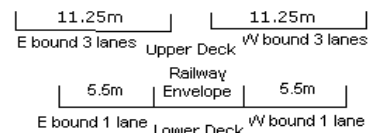
YEAR 2014

CORE STATION 5027

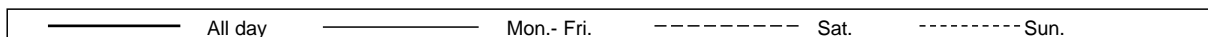
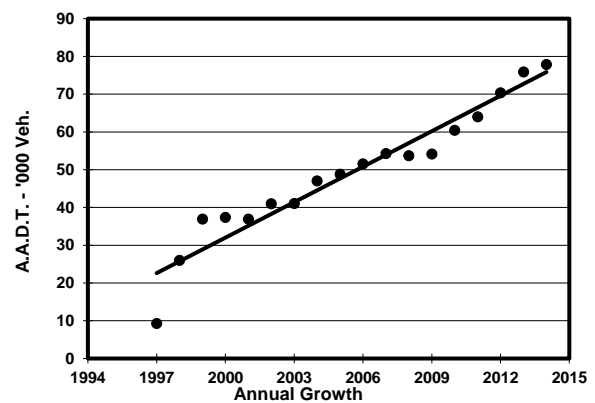
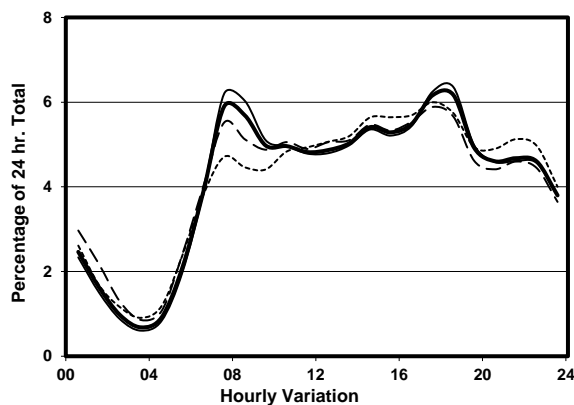
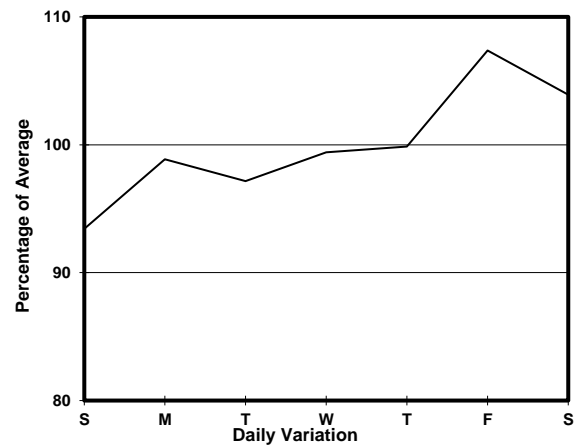
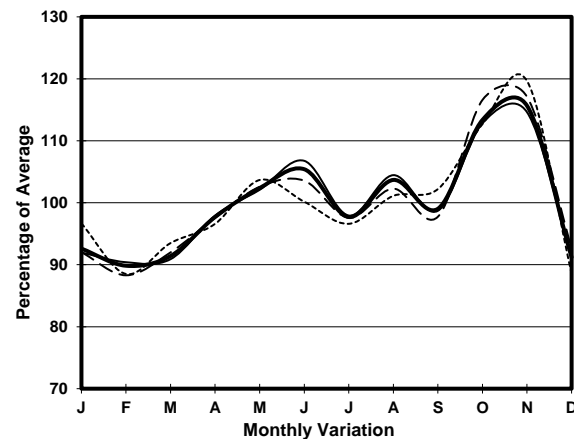
ROAD NETWORK MAJOR

ROAD TYPE EXPRESSWAY

LINK LANTAU LINK (from TSING MA BRIDGE EASTERN
END AT TSING YI to NGONG SHUEN AU)



1. TRAFFIC FLOW VARIATION AND GROWTH



2. TRAFFIC CHARACTERISTICS (BY DIRECTION)

Parameter	All - Day	Mon. - Fri.	Sat.	Sun.
EAST BOUND				
A.A.D.T.	38440	38800	40260	35830
R 12 / 24 - %	63.4	64.3	62.1	60.1
R 16 / 24 - %	82.9	83.5	81	82
AM Peak Hour	0700-0800	0700-0800	0800-0900	0700-0800
One-way flow at AM peak hour	1790	1880	1810	1460
T - % (AM)	-	15.2	-	-
PM Peak Hour	1800-1900	1800-1900	1800-1900	1800-1900
One-way flow at PM peak hour	2880	3050	2620	2350
T - % (PM)	-	15.1	-	-
Prop.of commercial vehicles - 16 hr.	-	19.7	-	-
WEST BOUND				
A.A.D.T.	39410	39700	41430	36960
R 12 / 24 - %	66.1	66.6	64.9	64.5
R 16 / 24 - %	84.1	84.9	82.1	82.6
AM Peak Hour	0700-0800	0700-0800	0700-0800	0700-0800
One-way flow at AM peak hour	2800	2990	2780	1970
T - % (AM)	-	23.3	-	-
PM Peak Hour	1700-1800	1700-1800	1700-1800	1700-1800
One-way flow at PM peak hour	2140	2140	2250	2090
T - % (PM)	-	23.3	-	-
Prop.of commercial vehicles - 16 hr.	-	20.7	-	-

3. OTHER INFORMATION AND COMMENT

4. Vehicle classification and occupancy - Monday to Friday

Time		Class of vehicle									
		Motor	Private	Taxi	Private	PLB	Goods veh.		Non	Fr. Bus	
		Cycle	Car		LB		Light	M & H	Fr. Bus	SD	DD
0700-0800	Pro	2.0	32.4	36.1	0.5	0.0	8.9	8.7	7.0	0.1	4.4
	Ocp	1.0	1.4	1.9	4.8	0.0	1.4	1.1	28.4	44.0	51.8
0800-0900	Pro	2.5	41.8	27.9	0.4	0.0	11.0	8.4	4.0	0.1	3.8
	Ocp	1.0	1.3	1.8	3.6	0.0	1.5	1.2	19.9	27.5	54.9
0900-1000	Pro	0.9	34.0	26.8	0.7	0.0	16.3	13.2	3.6	0.2	4.2
	Ocp	1.2	1.4	1.9	1.3	0.0	1.5	1.4	8.8	19.0	32.0
1000-1100	Pro	1.4	31.4	29.9	0.6	0.0	16.1	11.8	4.3	0.1	4.5
	Ocp	1.2	1.7	1.9	3.8	0.0	1.6	1.3	11.3	14.2	23.2
1100-1200	Pro	1.0	36.3	23.5	0.4	0.0	18.6	11.1	3.8	0.2	5.0
	Ocp	1.0	1.6	2.3	2.3	0.0	1.5	1.2	8.1	8.3	21.8
1200-1300	Pro	1.2	34.0	30.0	1.0	0.0	12.1	12.2	4.9	0.1	4.5
	Ocp	1.1	1.9	2.2	2.8	0.0	1.5	1.3	7.8	13.2	22.4
1300-1400	Pro	0.7	31.7	28.0	0.4	0.0	18.0	13.6	3.1	0.2	4.3
	Ocp	1.1	1.7	2.3	4.8	0.0	1.5	1.3	5.3	10.7	28.1
1400-1500	Pro	1.5	35.6	23.8	0.6	0.0	16.8	13.8	3.7	0.2	4.0
	Ocp	1.1	1.7	2.2	1.7	0.0	1.4	1.3	9.9	14.7	26.3
1500-1600	Pro	0.9	35.1	25.8	0.3	0.0	14.8	15.8	3.2	0.2	3.9
	Ocp	1.1	1.8	2.2	2.3	0.0	1.5	1.2	9.2	10.9	25.8
1600-1700	Pro	0.6	38.4	22.1	0.2	0.0	15.4	14.7	3.9	0.1	4.6
	Ocp	1.0	1.7	2.1	6.5	0.0	1.4	1.2	11.6	4.8	34.8
1700-1800	Pro	2.1	39.6	20.5	0.7	0.0	15.4	13.0	4.5	0.2	4.1
	Ocp	1.1	1.7	2.1	5.0	0.0	1.7	1.2	15.1	15.1	42.8
1800-1900 Peak hour	Pro	1.3	53.8	21.0	0.3	0.0	8.3	5.7	5.5	0.2	4.0
	Ocp	1.1	1.4	2.0	5.3	0.0	1.4	1.3	25.7	17.6	55.9
1900-2000	Pro	1.4	52.2	21.0	0.3	0.0	6.8	8.9	4.4	0.2	4.8
	Ocp	1.1	1.7	2.1	1.7	0.0	1.3	1.1	12.6	5.0	42.5
2000-2100	Pro	1.1	45.1	26.2	0.1	0.0	7.1	11.5	4.3	0.1	4.6
	Ocp	1.0	1.6	2.0	11.0	0.0	1.2	1.1	17.6	4.5	33.1
2100-2200	Pro	0.3	42.8	30.4	0.1	0.0	6.9	10.1	4.2	0.2	5.0
	Ocp	1.0	1.6	2.0	2.0	0.0	1.3	1.1	16.5	14.7	32.6
2200-2300	Pro	1.3	39.5	33.1	0.3	0.0	7.1	11.5	1.8	0.2	5.2
	Ocp	1.3	1.6	2.0	1.5	0.0	1.3	1.1	5.6	10.6	28.0
16 hours	Pro	1.3	39.0	26.5	0.4	0.0	12.5	11.4	4.2	0.2	4.4
	Ocp	1.1	1.6	2.0	3.4	0.0	1.5	1.2	15.3	13.2	35.3

Legend

Pro. Proportion of vehicles in % (Sum may not add up to 100% due to figure rounding)
Ocp. Average occupancy of vehicles
M&H Medium and Heavy